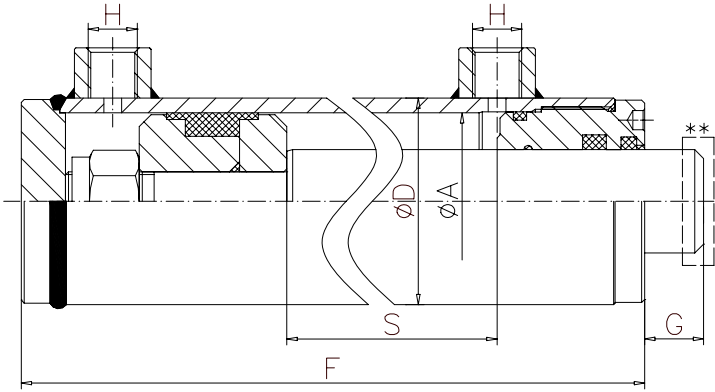


## STANDARD CYLINDERS



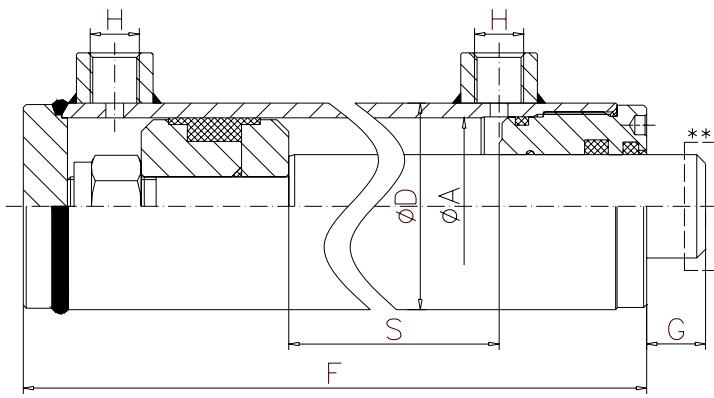
1. Working diameter -  $\text{ØA mm.}$
2. Tube: – **DIN 2393 ISO H9**
3. Rod: – steel **St – 52.3 (C 45)** ;  
**Chrome  $25^{\pm 5}$  Micron**
4. Temperature range : -  **$25^{\circ}\text{C} + 80^{\circ}\text{C}$**
5. Max peak pressure: **max 200 bar**

### Rod - $\text{Ø20 mm.}$

| Code         | $\text{ØA}$ | Stroke<br>S | F   | G  | $\text{ØD}$ | H    | Kg.  | EURO  |
|--------------|-------------|-------------|-----|----|-------------|------|------|-------|
| HS.04.20.100 | 40          | 100         | 230 | 22 | 50          | 1/4" | 2.27 | 41.66 |
| HS.04.20.150 |             | 150         | 280 |    |             |      | 2.67 | 44.06 |
| HS.04.20.200 |             | 200         | 330 |    |             |      | 3.05 | 46.14 |
| HS.04.20.250 |             | 250         | 380 |    |             |      | 3.45 | 48.54 |
| HS.04.20.300 |             | 300         | 430 |    |             |      | 3.85 | 50.96 |
| HS.04.20.350 |             | 350         | 480 |    |             |      | 4.27 | 53.02 |
| HS.04.20.400 |             | 400         | 530 |    |             |      | 4.65 | 55.42 |
| HS.04.20.450 |             | 450         | 580 |    |             |      | 5.08 | 57.14 |
| HS.04.20.500 |             | 500         | 630 |    |             |      | 5.49 | 59.22 |
| HS.04.20.550 |             | 550         | 680 |    |             |      | 5.89 | 61.62 |
| HS.04.20.600 |             | 600         | 730 |    |             |      | 6.29 | 64.06 |

### Rod - $\text{Ø25 mm.}$

| Code         | $\text{ØA}$ | Stroke<br>S | F   | G  | $\text{ØD}$ | H    | Kg.  | EURO  |
|--------------|-------------|-------------|-----|----|-------------|------|------|-------|
| HS.04.25.100 | 40          | 100         | 230 | 22 | 50          | 1/4" | 2.55 | 42.70 |
| HS.04.25.150 |             | 150         | 280 |    |             |      | 2.95 | 44.76 |
| HS.04.25.200 |             | 200         | 330 |    |             |      | 3.39 | 46.82 |
| HS.04.25.250 |             | 250         | 380 |    |             |      | 3.85 | 49.58 |
| HS.04.25.300 |             | 300         | 430 |    |             |      | 4.32 | 51.98 |
| HS.04.25.350 |             | 350         | 480 |    |             |      | 4.79 | 54.40 |
| HS.04.25.400 |             | 400         | 530 |    |             |      | 5.26 | 56.47 |
| HS.04.25.450 |             | 450         | 580 |    |             |      | 5.72 | 58.86 |
| HS.04.25.500 |             | 500         | 630 |    |             |      | 6.20 | 61.28 |
| HS.04.25.550 |             | 550         | 680 |    |             |      | 6.60 | 63.34 |
| HS.04.25.600 |             | 600         | 730 |    |             |      | 7.13 | 65.76 |



1. Working diameter -  $\varnothing A$  mm.
2. Tube: – **DIN 2393 ISO H9**
3. Rod: – steel **St – 52.3 (C 45)** ;  
**Chrome  $25^{\pm 5}$  Micron**
4. Temperature range : - **25°C + 80°C**
5. Max peak pressure: **max 200 bar**

### Rod - $\varnothing 25$ mm.

| Code          | $\varnothing A$ | Stroke<br>S | F    | G  | $\varnothing D$ | H    | Kg.   | EURO  |
|---------------|-----------------|-------------|------|----|-----------------|------|-------|-------|
| HS.05.25.100  | 50              | 100         | 240  | 22 | 60              | 3/8" | 3.29  | 46.48 |
| HS.05.25.150  |                 | 150         | 290  |    |                 |      | 3.83  | 49.58 |
| HS.05.25.200  |                 | 200         | 340  |    |                 |      | 4.34  | 52.32 |
| HS.05.25.250  |                 | 250         | 390  |    |                 |      | 4.85  | 55.08 |
| HS.05.25.300  |                 | 300         | 440  |    |                 |      | 5.35  | 57.50 |
| HS.05.25.350  |                 | 350         | 490  |    |                 |      | 5.94  | 60.26 |
| HS.05.25.400  |                 | 400         | 540  |    |                 |      | 6.40  | 62.66 |
| HS.05.25.450  |                 | 450         | 590  |    |                 |      | 7.30  | 65.42 |
| HS.05.25.500  |                 | 500         | 640  |    |                 |      | 7.43  | 67.48 |
| HS.05.25.550  |                 | 550         | 690  |    |                 |      | 8.06  | 69.90 |
| HS.05.25.600  |                 | 600         | 740  |    |                 |      | 8.46  | 72.64 |
| HS.05.25.800  |                 | 800         | 940  |    |                 |      | 10.71 | 83.66 |
| HS.05.25.1000 |                 | 1000        | 1140 |    |                 |      | 12.87 | 94.68 |

### Rod - $\varnothing 30$ mm.

| Code          | $\varnothing A$ | Stroke<br>S | F    | G  | $\varnothing D$ | H    | Kg.   | EURO   |
|---------------|-----------------|-------------|------|----|-----------------|------|-------|--------|
| HS.05.30.100  | 50              | 100         | 240  | 22 | 60              | 3/8" | 3.49  | 48.30  |
| HS.05.30.150  |                 | 150         | 290  |    |                 |      | 4.11  | 51.30  |
| HS.05.30.200  |                 | 200         | 340  |    |                 |      | 4.74  | 54.40  |
| HS.05.30.250  |                 | 250         | 390  |    |                 |      | 5.35  | 57.14  |
| HS.05.30.300  |                 | 300         | 440  |    |                 |      | 5.97  | 60.26  |
| HS.05.30.350  |                 | 350         | 490  |    |                 |      | 6.55  | 63.00  |
| HS.05.30.400  |                 | 400         | 540  |    |                 |      | 7.20  | 66.10  |
| HS.05.30.450  |                 | 450         | 590  |    |                 |      | 7.80  | 68.86  |
| HS.05.30.500  |                 | 500         | 640  |    |                 |      | 8.42  | 71.62  |
| HS.05.30.550  |                 | 550         | 690  |    |                 |      | 9.04  | 74.36  |
| HS.05.30.600  |                 | 600         | 740  |    |                 |      | 9.64  | 77.46  |
| HS.05.30.800  |                 | 800         | 940  |    |                 |      | 12.10 | 89.52  |
| HS.05.30.1000 |                 | 1000        | 1140 |    |                 |      | 14.57 | 100.54 |

**Rod - Ø30 mm.**

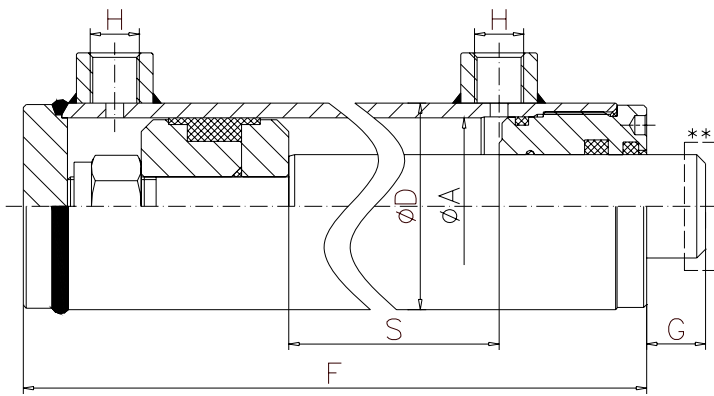
| Code          | ØA | Stroke S | F    | G  | Ø D | H    | Kg.   | EURO   |
|---------------|----|----------|------|----|-----|------|-------|--------|
| HS.06.30.100  | 60 | 100      | 260  | 23 | 70  | 3/8" | 4.82  | 54.40  |
| HS.06.30.150  |    | 150      | 310  |    |     |      | 5.55  | 57.14  |
| HS.06.30.200  |    | 200      | 360  |    |     |      | 6.20  | 60.60  |
| HS.06.30.250  |    | 250      | 410  |    |     |      | 6.87  | 64.04  |
| HS.06.30.300  |    | 300      | 460  |    |     |      | 7.55  | 67.14  |
| HS.06.30.350  |    | 350      | 510  |    |     |      | 8.20  | 70.58  |
| HS.06.30.400  |    | 400      | 560  |    |     |      | 8.90  | 73.68  |
| HS.06.30.450  |    | 450      | 610  |    |     |      | 9.53  | 76.78  |
| HS.06.30.500  |    | 500      | 660  |    |     |      | 10.25 | 79.54  |
| HS.06.30.550  |    | 550      | 710  |    |     |      | 10.86 | 82.64  |
| HS.06.30.600  |    | 600      | 760  |    |     |      | 11.60 | 85.38  |
| HS.06.30.800  |    | 800      | 960  |    |     |      | 14.26 | 98.80  |
| HS.06.30.1000 |    | 1000     | 1160 |    |     |      | 17.00 | 111.56 |

**Rod - Ø35 mm.**

| Code          | ØA | Stroke S | F    | G  | Ø D | H    | Kg.   | EURO   |
|---------------|----|----------|------|----|-----|------|-------|--------|
| HS.06.35.100  | 60 | 100      | 260  | 23 | 70  | 3/8" | 5.07  | 55.78  |
| HS.06.35.150  |    | 150      | 310  |    |     |      | 5.85  | 59.56  |
| HS.06.35.200  |    | 200      | 360  |    |     |      | 6.60  | 63.36  |
| HS.06.35.250  |    | 250      | 410  |    |     |      | 7.40  | 67.14  |
| HS.06.35.300  |    | 300      | 460  |    |     |      | 8.15  | 70.92  |
| HS.06.35.350  |    | 350      | 510  |    |     |      | 8.94  | 74.36  |
| HS.06.35.400  |    | 400      | 560  |    |     |      | 9.72  | 78.16  |
| HS.06.35.450  |    | 450      | 610  |    |     |      | 10.47 | 81.26  |
| HS.06.35.500  |    | 500      | 660  |    |     |      | 11.25 | 85.04  |
| HS.06.35.550  |    | 550      | 710  |    |     |      | 12.00 | 88.48  |
| HS.06.35.600  |    | 600      | 760  |    |     |      | 12.81 | 91.24  |
| HS.06.35.800  |    | 800      | 960  |    |     |      | 15.87 | 105.70 |
| HS.06.35.1000 |    | 1000     | 1160 |    |     |      | 18.93 | 117.06 |

**Rod - Ø40 mm.**

| Code          | ØA | Stroke S | F    | G  | Ø D | H    | Kg.   | EURO   |
|---------------|----|----------|------|----|-----|------|-------|--------|
| HS.06.40.100  | 60 | 100      | 260  | 23 | 70  | 3/8" | 5.47  | 58.34  |
| HS.06.40.150  |    | 150      | 310  |    |     |      | 6.36  | 62.76  |
| HS.06.40.200  |    | 200      | 360  |    |     |      | 7.25  | 67.14  |
| HS.06.40.250  |    | 250      | 410  |    |     |      | 8.14  | 71.62  |
| HS.06.40.300  |    | 300      | 460  |    |     |      | 9.03  | 75.74  |
| HS.06.40.350  |    | 350      | 510  |    |     |      | 9.90  | 79.88  |
| HS.06.40.400  |    | 400      | 560  |    |     |      | 10.79 | 84.00  |
| HS.06.40.450  |    | 450      | 610  |    |     |      | 11.64 | 88.48  |
| HS.06.40.500  |    | 500      | 660  |    |     |      | 12.52 | 91.92  |
| HS.06.40.550  |    | 550      | 710  |    |     |      | 13.45 | 96.06  |
| HS.06.40.600  |    | 600      | 760  |    |     |      | 14.30 | 100.2  |
| HS.06.40.800  |    | 800      | 960  |    |     |      | 17.82 | 115.00 |
| HS.06.40.1000 |    | 1000     | 1160 |    |     |      | 21.40 | 128.08 |



1. Working diameter -  $\varnothing A$  mm.
2. Tube: – **DIN 2393 ISO H9**
3. Rod: – steel **St – 52.3 (C 45)** ;  
**Chrome  $25^{\pm 5}$  Micron**
4. Temperature range : - **25°C + 80°C**
5. Max peak pressure: **max 200 bar**

### Rod - $\varnothing 35$ mm.

| Code          | $\varnothing A$ | Stroke<br>S | F    | G  | $\varnothing D$ | H    | Kg.   | EURO   |
|---------------|-----------------|-------------|------|----|-----------------|------|-------|--------|
| HS.07.35.100  | 70              | 100         | 260  | 23 | 80              | 3/8" | 6.09  | 61.28  |
| HS.07.35.150  |                 | 150         | 310  |    |                 |      | 6.95  | 65.42  |
| HS.07.35.200  |                 | 200         | 360  |    |                 |      | 7.74  | 69.54  |
| HS.07.35.250  |                 | 250         | 410  |    |                 |      | 8.60  | 73.68  |
| HS.07.35.300  |                 | 300         | 460  |    |                 |      | 9.40  | 77.82  |
| HS.07.35.350  |                 | 350         | 510  |    |                 |      | 10.26 | 81.94  |
| HS.07.35.400  |                 | 400         | 560  |    |                 |      | 11.00 | 85.72  |
| HS.07.35.450  |                 | 450         | 610  |    |                 |      | 11.88 | 89.52  |
| HS.07.35.500  |                 | 500         | 660  |    |                 |      | 12.60 | 93.66  |
| HS.07.35.550  |                 | 550         | 710  |    |                 |      | 13.66 | 97.44  |
| HS.07.35.600  |                 | 600         | 760  |    |                 |      | 14.20 | 101.22 |
| HS.07.35.800  |                 | 800         | 960  |    |                 |      | 17.56 | 120.39 |
| HS.07.35.1000 |                 | 1000        | 1160 |    |                 |      | 21.26 | 133.77 |

### Rod - $\varnothing 40$ mm.

| Code          | $\varnothing A$ | Stroke<br>S | F    | G  | $\varnothing D$ | H    | Kg.   | EURO   |
|---------------|-----------------|-------------|------|----|-----------------|------|-------|--------|
| HS.07.40.100  | 70              | 100         | 260  | 23 | 80              | 3/8" | 6.95  | 62.12  |
| HS.07.40.150  |                 | 150         | 310  |    |                 |      | 7.74  | 66.52  |
| HS.07.40.200  |                 | 200         | 360  |    |                 |      | 8.49  | 70.92  |
| HS.07.40.250  |                 | 250         | 410  |    |                 |      | 9.26  | 75.40  |
| HS.07.40.300  |                 | 300         | 460  |    |                 |      | 10.24 | 79.88  |
| HS.07.40.350  |                 | 350         | 510  |    |                 |      | 11.20 | 82.36  |
| HS.07.40.400  |                 | 400         | 560  |    |                 |      | 12.80 | 88.48  |
| HS.07.40.450  |                 | 450         | 610  |    |                 |      | 13.11 | 92.96  |
| HS.07.40.500  |                 | 500         | 660  |    |                 |      | 14.01 | 97.28  |
| HS.07.40.550  |                 | 550         | 710  |    |                 |      | 15.10 | 101.22 |
| HS.07.40.600  |                 | 600         | 760  |    |                 |      | 15.99 | 105.36 |
| HS.07.40.800  |                 | 800         | 960  |    |                 |      | 19.73 | 121.54 |
| HS.07.40.1000 |                 | 1000        | 1160 |    |                 |      | 23.51 | 135.32 |

## Rod - Ø40 mm.

| Code          | ØA | Stroke S | F    | G  | Ø D | H  | Kg.   | EURO   |
|---------------|----|----------|------|----|-----|----|-------|--------|
| HS.08.40.200  | 80 | 200      | 380  | 25 | 92  | ½" | 11.08 | 83.66  |
| HS.08.40.250  |    | 250      | 430  |    |     |    | 12.22 | 88.48  |
| HS.08.40.300  |    | 300      | 480  |    |     |    | 13.35 | 93.04  |
| HS.08.40.400  |    | 400      | 580  |    |     |    | 15.56 | 103.30 |
| HS.08.40.500  |    | 500      | 680  |    |     |    | 17.77 | 113.28 |
| HS.08.40.600  |    | 600      | 780  |    |     |    | 18.90 | 122.92 |
| HS.08.40.800  |    | 800      | 980  |    |     |    | 24.50 | 141.86 |
| HS.08.40.1000 |    | 1000     | 1180 |    |     |    | 25.63 | 159.76 |

## Rod - Ø50 mm.

| Code          | ØA | Stroke S | F    | G  | Ø D | H  | Kg.   | EURO   |
|---------------|----|----------|------|----|-----|----|-------|--------|
| HS.08.50.200  | 80 | 200      | 380  | 25 | 92  | ½" | 12.35 | 89.18  |
| HS.08.50.250  |    | 250      | 430  |    |     |    | 13.73 | 94.68  |
| HS.08.50.300  |    | 300      | 480  |    |     |    | 15.15 | 100.54 |
| HS.08.50.400  |    | 400      | 580  |    |     |    | 16.55 | 112.24 |
| HS.08.50.500  |    | 500      | 680  |    |     |    | 20.71 | 123.94 |
| HS.08.50.600  |    | 600      | 780  |    |     |    | 22.11 | 135.32 |
| HS.08.50.800  |    | 800      | 980  |    |     |    | 29.50 | 158.72 |
| HS.08.50.1000 |    | 1000     | 1180 |    |     |    | 35.00 | 182.14 |

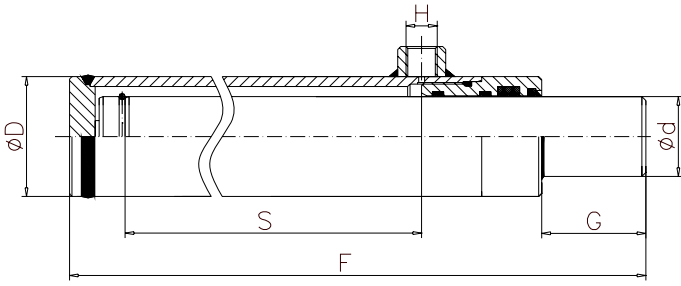
## Rod - Ø50 mm.

| Code          | ØA  | Stroke S | Z    | G  | Ø D | E  | Kg.   | EURO   |
|---------------|-----|----------|------|----|-----|----|-------|--------|
| HS.10.50.200  | 100 | 200      | 410  | 25 | 115 | ½" | 19.20 | 122.00 |
| HS.10.50.250  |     | 250      | 460  |    |     |    | 21.40 | 134.44 |
| HS.10.50.300  |     | 300      | 510  |    |     |    | 23.00 | 149.08 |
| HS.10.50.400  |     | 400      | 610  |    |     |    | 26.50 | 164.58 |
| HS.10.50.500  |     | 500      | 710  |    |     |    | 30.00 | 179.38 |
| HS.10.50.600  |     | 600      | 810  |    |     |    | 33.50 | 193.86 |
| HS.10.50.800  |     | 800      | 1010 |    |     |    | 40.50 | 225.18 |
| HS.10.50.1000 |     | 1000     | 1210 |    |     |    | 47.50 | 255.12 |

## Rod - Ø60 mm.

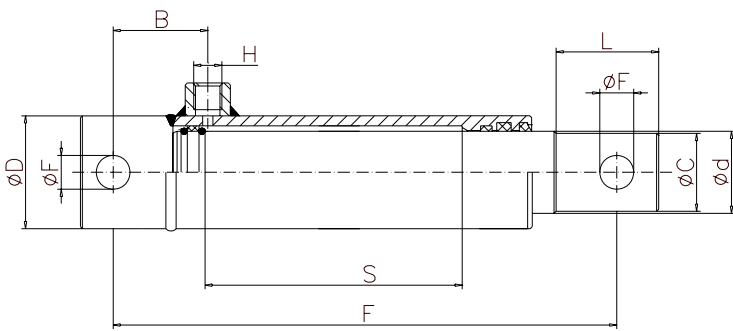
| Code          | ØA  | Stroke S | Z    | G  | Ø D | E  | Kg.   | EURO   |
|---------------|-----|----------|------|----|-----|----|-------|--------|
| HS.10.60.200  | 100 | 200      | 410  | 25 | 115 | ½" | 21.30 | 119.80 |
| HS.10.60.250  |     | 250      | 460  |    |     |    | 23.40 | 134.44 |
| HS.10.60.300  |     | 300      | 510  |    |     |    | 25.50 | 149.08 |
| HS.10.60.400  |     | 400      | 610  |    |     |    | 29.50 | 164.58 |
| HS.10.60.500  |     | 500      | 710  |    |     |    | 33.50 | 179.38 |
| HS.10.60.600  |     | 600      | 810  |    |     |    | 37.50 | 193.86 |
| HS.10.60.800  |     | 800      | 1010 |    |     |    | 46.00 | 225.18 |
| HS.10.60.1000 |     | 1000     | 1210 |    |     |    | 54.50 | 255.12 |

## PLINGER CYLINDER



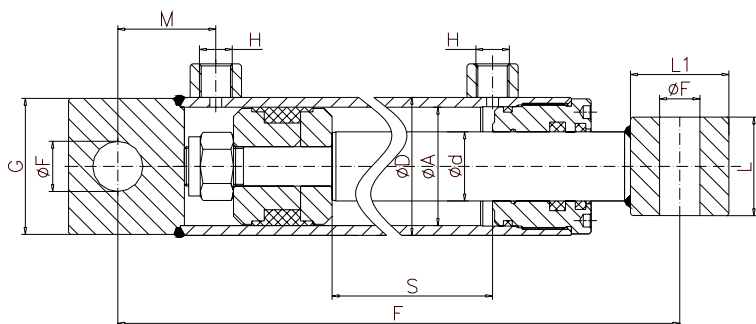
1. Plunger : – steel **St – 52.3 (C45)**
2. Max peak pressure : **max 200 bar**
3. Chrome : - **25<sup>±5</sup> Micron**
4. Temperature range : - **25°C + 80°C**
5. Plunger speed : **max. 20m/min**

| Code         | Ø d | Stroke S | F   | G  | Ø D | H     | Kg.   | EURO  |
|--------------|-----|----------|-----|----|-----|-------|-------|-------|
| HSSP.030.200 | 30  | 200      | 326 | 40 | 50  | 3/8"  | 3.64  | 33.74 |
| HSSP.030.250 |     | 250      | 376 |    |     |       | 4.19  | 36.16 |
| HSSP.030.300 |     | 300      | 426 |    |     |       | 4.75  | 38.56 |
| HSSP.030.350 |     | 350      | 476 |    |     |       | 5.31  | 41.32 |
| HSSP.030.400 |     | 400      | 526 |    |     |       | 5.86  | 43.72 |
| HSSP.030.500 |     | 500      | 626 |    |     |       | 6.96  | 47.86 |
| HSSP.040.200 | 40  | 200      | 338 | 45 | 60  |       | 5.64  | 41.32 |
| HSSP.040.300 |     | 300      | 438 |    |     |       | 7.29  | 48.20 |
| HSSP.040.400 |     | 400      | 538 |    |     |       | 8.98  | 55.08 |
| HSSP.040.500 |     | 500      | 638 |    |     |       | 10.61 | 61.98 |
| HSSP.040.600 |     | 600      | 738 |    |     |       | 12.28 | 69.20 |
| HSSP.050.300 | 50  | 300      | 450 | 50 | 70  |       | 10.47 | 59.56 |
| HSSP.050.400 |     | 400      | 550 |    |     | 12.86 | 68.86 |       |
| HSSP.050.500 |     | 500      | 650 |    |     | 15.14 | 78.16 |       |
| HSSP.050.600 |     | 600      | 750 |    |     | 17.50 | 87.46 |       |



## SINGLE ACTING CYLYNDERS

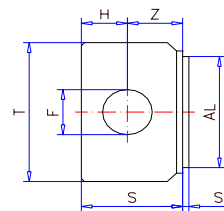
| Code         | Ø d | Stroke S | F   | H    | B  | Ø C | L  | Ø F | Ø D | Kg.  | EURO  |
|--------------|-----|----------|-----|------|----|-----|----|-----|-----|------|-------|
| HSSA.025.100 | 25  | 100      | 190 | 3/8" | 40 | 22  | 35 | 14  | 40  | 1.62 | 35.48 |
| HSSA.025.150 |     | 150      | 240 |      |    |     |    |     |     | 2.05 | 37.26 |
| HSSA.025.200 |     | 200      | 290 |      |    |     |    |     |     | 2.45 | 38.92 |
| HSSA.025.250 |     | 250      | 340 |      |    |     |    |     |     | 2.85 | 41.32 |
| HSSA.025.300 |     | 300      | 390 |      |    |     |    |     |     | 3.27 | 43.04 |
| HSSA.030.200 | 30  | 200      | 300 |      | 42 | 27  | 37 | 16  | 50  | 3.62 | 37.88 |
| HSSA.030.250 |     | 250      | 350 |      |    |     |    |     |     | 4.17 | 40.64 |
| HSSA.030.300 |     | 300      | 400 |      |    |     |    |     |     | 4.73 | 43.06 |
| HSSA.030.350 |     | 350      | 450 |      |    |     |    |     |     | 5.28 | 45.80 |
| HSSA.030.400 |     | 400      | 500 |      |    |     |    |     |     | 5.80 | 48.20 |
| HSSA.040.200 | 40  | 200      | 330 |      | 47 | 37  | 49 | 22  | 60  | 6.00 | 45.80 |
| HSSA.040.250 |     | 250      | 380 |      |    |     |    |     |     | 6.85 | 49.24 |
| HSSA.040.300 |     | 300      | 430 |      |    |     |    |     |     | 7.66 | 51.66 |
| HSSA.040.350 |     | 350      | 480 |      |    |     |    |     |     | 8.50 | 55.10 |
| HSSA.040.400 |     | 400      | 530 |      |    |     |    |     |     | 9.33 | 58.54 |



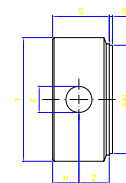
## DUBLE ACTING CYLYNDERS

| Code            | ØD  | ØA  | Ød    | Storke S | Z    | ØE   | M  | L  | L <sub>1</sub> | ØF   | G  | Kg.   | EURO   |
|-----------------|-----|-----|-------|----------|------|------|----|----|----------------|------|----|-------|--------|
| HSDA.040.25.100 | 50  | 40  | 25    | 100      | 270  | 3/8" | 45 | 40 | 40             | 20.5 | 50 | 3.24  | 48.54  |
| HSDA.040.25.150 |     |     |       | 150      | 320  |      |    |    |                |      |    | 3.72  | 50.64  |
| HSDA.040.25.200 |     |     |       | 200      | 370  |      |    |    |                |      |    | 4.20  | 53.02  |
| HSDA.040.25.250 |     |     |       | 250      | 420  |      |    |    |                |      |    | 4.70  | 55.08  |
| HSDA.040.25.300 |     |     |       | 300      | 470  |      |    |    |                |      |    | 5.20  | 57.50  |
| HSDA.040.25.400 |     |     |       | 400      | 570  |      |    |    |                |      |    | 6.10  | 61.64  |
| HSDA.040.25.500 |     |     |       | 500      | 670  |      |    |    |                |      |    | 7.00  | 66.10  |
| HSDA.040.25.600 |     |     |       | 600      | 770  |      |    |    |                |      |    | 8.00  | 70.58  |
| HSDA.040.25.700 |     |     |       | 700      | 870  |      |    |    |                |      |    | 8.90  | 75.74  |
| HSDA.040.25.700 |     |     |       | 800      | 970  |      |    |    |                |      |    | 9.80  | 80.92  |
| HSDA.050.30.100 | 60  | 50  | 30    | 100      | 300  | 3/8" | 58 | 50 | 50             | 25.5 | 60 | 5.20  | 57.16  |
| HSDA.050.30.150 |     |     |       | 150      | 350  |      |    |    |                |      |    | 5.80  | 59.90  |
| HSDA.050.30.200 |     |     |       | 200      | 400  |      |    |    |                |      |    | 6.40  | 63.00  |
| HSDA.050.30.250 |     |     |       | 250      | 450  |      |    |    |                |      |    | 7.00  | 66.10  |
| HSDA.050.30.300 |     |     |       | 300      | 500  |      |    |    |                |      |    | 7.60  | 68.52  |
| HSDA.050.30.400 |     |     |       | 400      | 600  |      |    |    |                |      |    | 8.90  | 74.72  |
| HSDA.050.30.500 |     |     |       | 500      | 700  |      |    |    |                |      |    | 10.10 | 80.22  |
| HSDA.050.30.600 |     |     |       | 600      | 800  |      |    |    |                |      |    | 11.30 | 86.08  |
| HSDA.050.30.700 |     |     |       | 700      | 900  |      |    |    |                |      |    | 12.10 | 92.96  |
| HSDA.050.30.800 |     |     |       | 800      | 1000 |      |    |    |                |      |    | 13.80 | 99.84  |
| HSDA.060.30.100 | 70  | 60  | 30    | 100      | 300  | 3/8" | 58 | 50 | 50             | 25.5 | 70 | 6.30  | 65.42  |
| HSDA.060.30.150 |     |     |       | 150      | 350  |      |    |    |                |      |    | 7.00  | 67.84  |
| HSDA.060.30.200 |     |     |       | 200      | 400  |      |    |    |                |      |    | 7.70  | 70.94  |
| HSDA.060.30.250 |     |     |       | 250      | 450  |      |    |    |                |      |    | 8.30  | 73.68  |
| HSDA.060.30.300 |     |     |       | 300      | 500  |      |    |    |                |      |    | 9.00  | 76.78  |
| HSDA.060.30.350 |     |     |       | 350      | 550  |      |    |    |                |      |    | 9.70  | 79.54  |
| HSDA.060.30.400 |     |     |       | 400      | 600  |      |    |    |                |      |    | 10.40 | 82.30  |
| HSDA.060.30.450 |     |     |       | 450      | 650  |      |    |    |                |      |    | 11.00 | 85.40  |
| HSDA.060.30.500 |     |     |       | 500      | 700  |      |    |    |                |      |    | 11.70 | 88.50  |
| HSDA.060.30.600 |     |     |       | 600      | 800  |      |    |    |                |      |    | 12.44 | 95.38  |
| HSDA.060.30.700 | 700 | 900 | 14.35 | 102.26   |      |      |    |    |                |      |    |       |        |
| HSDA.070.40.200 | 80  | 70  | 40    | 200      | 410  | 3/8" | 58 | 50 | 50             | 30.5 | 80 | 10.50 | 89.18  |
| HSDA.070.40.250 |     |     |       | 250      | 460  |      |    |    |                |      |    | 11.40 | 93.66  |
| HSDA.070.40.300 |     |     |       | 300      | 510  |      |    |    |                |      |    | 12.30 | 98.14  |
| HSDA.070.40.350 |     |     |       | 350      | 560  |      |    |    |                |      |    | 13.30 | 102.60 |
| HSDA.070.40.400 |     |     |       | 400      | 610  |      |    |    |                |      |    | 14.20 | 107.08 |
| HSDA.070.40.450 |     |     |       | 450      | 660  |      |    |    |                |      |    | 15.20 | 111.56 |
| HSDA.070.40.500 |     |     |       | 500      | 710  |      |    |    |                |      |    | 16.10 | 116.04 |
| HSDA.070.40.600 |     |     |       | 600      | 810  |      |    |    |                |      |    | 18.20 | 122.24 |
| HSDA.070.40.700 | 700 | 910 | 20.00 | 129.12   |      |      |    |    |                |      |    |       |        |
| HSDA.080.40.200 | 92  | 80  | 40    | 200      | 410  | 3/8" | 58 | 50 | 50             | 30.5 | 90 | 13.30 | 96.76  |
| HSDA.080.40.250 |     |     |       | 250      | 460  |      |    |    |                |      |    | 14.50 | 101.38 |
| HSDA.080.40.300 |     |     |       | 300      | 510  |      |    |    |                |      |    | 15.60 | 107.42 |
| HSDA.080.40.350 |     |     |       | 350      | 560  |      |    |    |                |      |    | 16.70 | 115.34 |
| HSDA.080.40.400 |     |     |       | 400      | 610  |      |    |    |                |      |    | 18.00 | 118.10 |
| HSDA.080.40.500 |     |     |       | 500      | 710  |      |    |    |                |      |    | 20.00 | 128.78 |
| HSDA.080.40.600 |     |     |       | 600      | 810  |      |    |    |                |      |    | 22.00 | 139.46 |
| HSDA.080.40.700 | 700 | 910 | 24.50 | 149.78   |      |      |    |    |                |      |    |       |        |

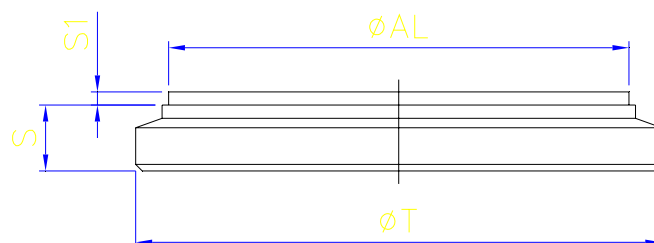
| Code           | Ø AL | Ø T | S  | S 1 | ØF | H    | Z    | Kg   | EURO  |
|----------------|------|-----|----|-----|----|------|------|------|-------|
| HSH.40.50.16   | 40   | 50  | 33 | 2   | 16 | 15   | 18   | 0.42 | 4.24  |
| HSH.50.60.20   | 50   | 60  | 43 | 2   | 20 | 20   | 23   | 0.80 | 5.54  |
| HSH.60.70.25   | 60   | 70  | 48 | 2   | 25 | 22.5 | 25.5 | 1.20 | 4.53  |
| HSH.70.80.25   | 70   | 80  | 48 | 2   | 25 | 22.5 | 25.5 | 1.60 | 10.52 |
| HSH.80.95.30   | 80   | 95  | 58 | 2   | 30 | 25   | 33   | 2.70 | 16.88 |
| HSH.100.115.35 | 100  | 115 | 68 | 2   | 35 | 30   | 38   | 4.70 | 20.38 |



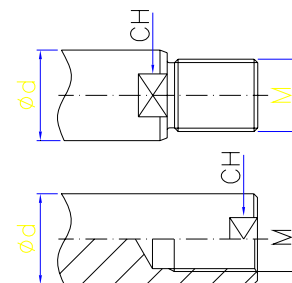
| Code           | ØAL | ØT  | S  | S 1 | ØF | H  | Z  | ØG  | K  | Kg   | EURO  |
|----------------|-----|-----|----|-----|----|----|----|-----|----|------|-------|
| HSP.40.50.16   | 40  | 50  | 48 | 2   | 16 | 15 | 33 | 1/4 | 30 | 0.60 | 6.80  |
| HSP.50.60.20   | 50  | 60  | 58 | 2   | 20 | 20 | 38 | 3/8 | 38 | 1.10 | 8.54  |
| HSP.60.70.25   | 60  | 70  | 58 | 2   | 25 | 23 | 35 | 3/8 | 38 | 1.40 | 12.92 |
| HSP.70.80.25   | 70  | 80  | 58 | 2   | 25 | 23 | 35 | 3/8 | 38 | 1.95 | 14.54 |
| HSP.80.95.30   | 80  | 95  | 73 | 2   | 30 | 25 | 48 | 1/2 | 47 | 2.50 | 22.18 |
| HSP.100.115.35 | 100 | 115 | 73 | 2   | 35 | 30 | 43 | 1/2 | 47 | 4.50 | 26.62 |



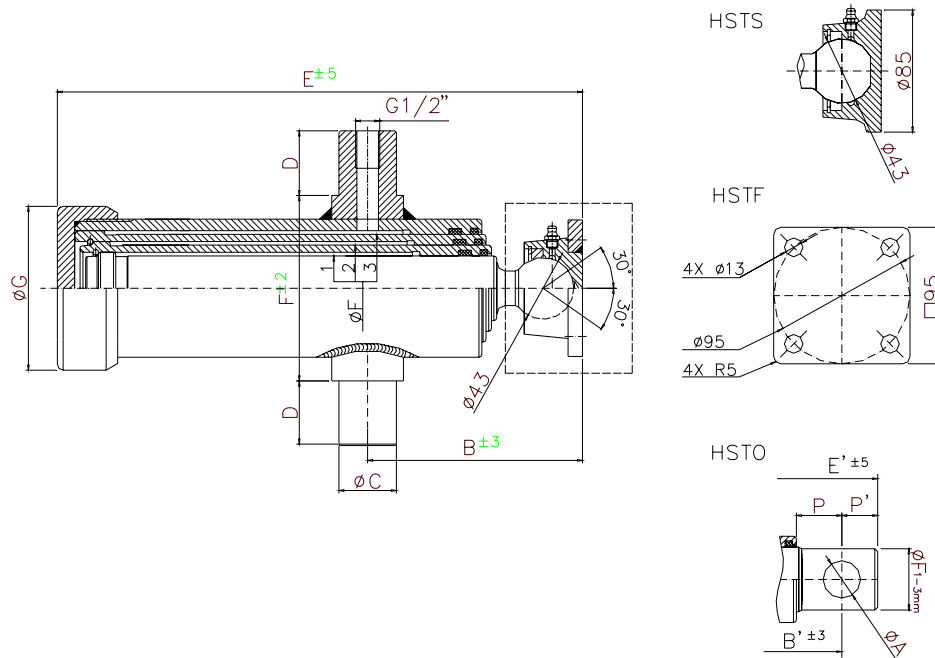
| Code         | ØAL | ØT  | S  | S 1 | Kg   | EURO  |
|--------------|-----|-----|----|-----|------|-------|
| HSEP.030.040 | 30  | 40  | 6  | 2   | 0.06 | 1.18  |
| HSEP.032.042 | 32  | 42  | 6  | 2   | 0.06 | 1.26  |
| HSEP.035.045 | 35  | 45  | 8  | 2   | 0.10 | 1.32  |
| HSEP.040.050 | 40  | 50  | 8  | 2   | 0.13 | 1.40  |
| HSEP.045.055 | 45  | 55  | 8  | 2   | 0.16 | 1.55  |
| HSEP.050.060 | 50  | 60  | 8  | 2   | 0.19 | 1.76  |
| HSEP.060.070 | 60  | 70  | 10 | 2   | 0.33 | 2.70  |
| HSEP.063.073 | 63  | 73  | 10 | 2   | 0.35 | 3.00  |
| HSEP.065.075 | 65  | 75  | 10 | 2   | 0.38 | 2.88  |
| HSEP.065.080 | 65  | 80  | 10 | 2   | 0.40 | 3.34  |
| HSEP.070.080 | 70  | 80  | 10 | 2   | 0.43 | 3.04  |
| HSEP.075.090 | 75  | 90  | 10 | 2   | 0.53 | 4.04  |
| HSEP.080.090 | 80  | 90  | 10 | 2   | 0.55 | 3.50  |
| HSEP.080.095 | 80  | 95  | 10 | 2   | 0.58 | 3.98  |
| HSEP.085.100 | 85  | 100 | 13 | 2   | 0.77 | 3.80  |
| HSEP.090.105 | 90  | 105 | 13 | 2   | 0.86 | 4.66  |
| HSEP.100.115 | 100 | 115 | 13 | 2   | 1.05 | 4.66  |
| HSEP.110.125 | 110 | 125 | 13 | 2   | 1.34 | 3.96  |
| HSEP.120.140 | 120 | 140 | 16 | 2   | 2.00 | 6.96  |
| HSEP.125.145 | 125 | 145 | 16 | 2   | 2.11 | 7.52  |
| HSEP.140.160 | 140 | 160 | 16 | 2   | 2.67 | 8.46  |
| HSEP.150.170 | 150 | 170 | 18 | 2   | 3.33 | 10.48 |
| HSEP.160.180 | 160 | 180 | 18 | 2   | 3.79 | 13.24 |



| ROD | BORE |     |    | M       | M <sub>1</sub> | CH |
|-----|------|-----|----|---------|----------------|----|
| 20  | 40   |     |    | M16x1.5 | M12            | 17 |
| 25  | 50   | 40  |    | M16x1.5 | M14            | 22 |
| 30  | 50   | 60  |    | M22x1.5 | M20x1.5        | 27 |
| 35  | 60   | 70  |    | M28x1.5 | M24x2          | 30 |
| 40  | 60   | 70  | 80 | M28x1.5 | M30x2          | 36 |
| 50  | 80   | 100 |    | M35x1.5 | M36x2          | 41 |
| 60  | 100  |     |    | M45x1.5 | M42x2          | 50 |



# TELESCOPIC HYDRAULIC CYLINDER



| КОД<br>CODE | 1  | 2  | 3  | 4  | 5  | ХОД<br>STR<br>ОКЕ | A     | B   | B'  | C  | D  | E   | E'  | F   | G   | P  | P' |
|-------------|----|----|----|----|----|-------------------|-------|-----|-----|----|----|-----|-----|-----|-----|----|----|
| 231         | 30 | 45 |    |    |    | 700               | 16.25 | 150 | 105 | 30 | 35 | 495 | 485 | 85  | 80  | 25 | 20 |
| 232         | 30 | 45 |    |    |    | 600               | 16.25 | 150 | 105 | 30 | 35 | 445 | 435 | 85  | 80  | 25 | 20 |
| 233         | 30 | 45 |    |    |    | 500               | 16.25 | 150 | 105 | 30 | 35 | 395 | 385 | 85  | 80  | 25 | 20 |
| 241         | 45 | 61 |    |    |    | 700               | 25.25 | 150 | 105 | 35 | 40 | 495 | 495 | 100 | 95  | 30 | 25 |
| 242         | 45 | 61 |    |    |    | 600               | 25.25 | 150 | 105 | 35 | 40 | 445 | 445 | 100 | 95  | 30 | 25 |
| 243         | 45 | 61 |    |    |    | 500               | 25.25 | 150 | 105 | 35 | 40 | 395 | 395 | 100 | 95  | 30 | 25 |
| 261         | 61 | 76 |    |    |    | 700               | 30.25 | 150 | 105 | 35 | 40 | 495 | 505 | 115 | 108 | 35 | 30 |
| 262         | 61 | 76 |    |    |    | 600               | 30.25 | 150 | 105 | 35 | 40 | 445 | 455 | 115 | 108 | 35 | 30 |
| 263         | 61 | 76 |    |    |    | 500               | 30.25 | 150 | 105 | 35 | 40 | 395 | 405 | 115 | 108 | 35 | 30 |
| 271         | 76 | 91 |    |    |    | 700               | 35.25 | 150 | 105 | 35 | 40 | 495 | 510 | 135 | 128 | 40 | 30 |
| 272         | 76 | 91 |    |    |    | 600               | 35.25 | 150 | 105 | 35 | 40 | 445 | 460 | 135 | 128 | 40 | 30 |
| 273         | 76 | 91 |    |    |    | 500               | 35.25 | 150 | 105 | 35 | 40 | 395 | 410 | 135 | 128 | 40 | 30 |
| 331         | 30 | 45 | 61 |    |    | 1050              |       | 147 |     | 35 | 40 | 495 |     | 100 | 95  |    |    |
| 332         | 30 | 45 | 61 |    |    | 900               |       | 147 |     | 35 | 40 | 495 |     | 100 | 95  |    |    |
| 333         | 30 | 45 | 61 |    |    | 750               |       | 147 |     | 35 | 40 | 495 |     | 100 | 95  |    |    |
| 341         | 45 | 61 | 76 |    |    | 1050              | 25.25 | 147 | 102 | 35 | 40 | 495 | 495 | 115 | 108 | 30 | 25 |
| 342         | 45 | 61 | 76 |    |    | 900               | 25.25 | 147 | 102 | 35 | 40 | 445 | 445 | 115 | 108 | 30 | 25 |
| 343         | 45 | 61 | 76 |    |    | 750               | 25.25 | 147 | 102 | 35 | 40 | 395 | 395 | 115 | 108 | 30 | 25 |
| 361         | 61 | 76 | 91 |    |    | 1050              | 30.25 | 147 | 102 | 35 | 40 | 495 | 505 | 135 | 128 | 35 | 30 |
| 362         | 61 | 76 | 91 |    |    | 900               | 30.25 | 147 | 102 | 35 | 40 | 445 | 455 | 135 | 128 | 35 | 30 |
| 363         | 61 | 76 | 91 |    |    | 750               | 30.25 | 147 | 102 | 35 | 40 | 395 | 405 | 135 | 128 | 35 | 30 |
| 431         | 30 | 45 | 61 | 76 |    | 1400              |       | 150 |     | 35 | 40 | 495 |     | 115 | 108 |    |    |
| 432         | 30 | 45 | 61 | 76 |    | 1200              |       | 150 |     | 35 | 40 | 445 |     | 115 | 108 |    |    |
| 433         | 30 | 45 | 61 | 76 |    | 1000              |       | 150 |     | 35 | 40 | 395 |     | 115 | 108 |    |    |
| 434         | 30 | 45 | 61 | 76 |    | 800               |       | 150 |     | 35 | 40 | 345 |     | 115 | 108 |    |    |
| 441         | 45 | 61 | 76 | 91 |    | 1400              | 25.25 | 150 | 105 | 35 | 40 | 495 | 495 | 135 | 128 | 30 | 25 |
| 442         | 45 | 61 | 76 | 91 |    | 1200              | 25.25 | 150 | 105 | 35 | 40 | 445 | 445 | 135 | 128 | 30 | 25 |
| 443         | 45 | 61 | 76 | 91 |    | 1000              | 25.25 | 150 | 105 | 35 | 40 | 395 | 395 | 135 | 128 | 30 | 25 |
| 444         | 45 | 61 | 76 | 91 |    | 800               | 25.25 | 150 | 105 | 35 | 40 | 345 | 345 | 135 | 128 | 30 | 25 |
| 531         | 30 | 45 | 61 | 76 | 91 | 1750              |       | 150 |     | 35 | 40 | 495 |     | 135 | 128 |    |    |
| 532         | 30 | 45 | 61 | 76 | 91 | 1500              |       | 150 |     | 35 | 40 | 445 |     | 135 | 128 |    |    |
| 533         | 30 | 45 | 61 | 76 | 91 | 1250              |       | 150 |     | 35 | 40 | 395 |     | 135 | 128 |    |    |
| 534         | 30 | 45 | 61 | 76 | 91 | 1000              |       | 150 |     | 35 | 40 | 345 |     | 135 | 128 |    |    |

Contact Us

**Hydrosystem Ltd.**

Bulgaria, Yambol 8600

15 Jambolen Str.

Phone: +359 46 661652

Fax: +359 46 661653

<http://www.hydrosystem.net>

e-mail: [office@hydrosystem.net](mailto:office@hydrosystem.net)